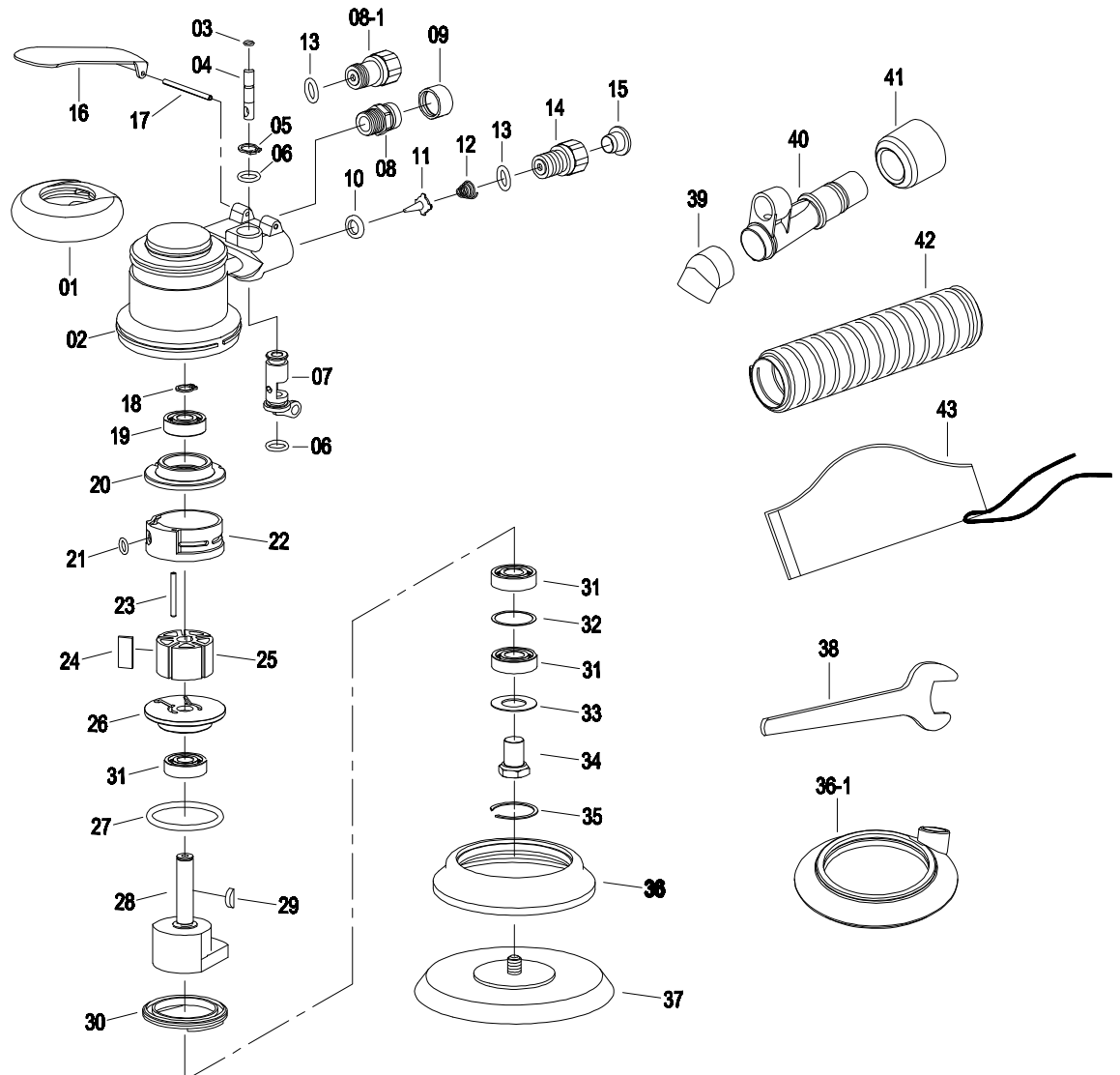




## Features

- Air Orbit Sander 5"
- Heavy Duty
- Non-Vacuum



## SPECIFICATION

Pad. Diameter: 125 mm 5"

Orbit Diameter: 5 mm, 3/16"

Free Speed: 10500 rpm

Weight: 0.93 kg

| NO.  | DESCRIPTION          | Q' TY | NO.  | DESCRIPTION       | Q' TY |
|------|----------------------|-------|------|-------------------|-------|
| 01   | Housing Grip         | 1     | 25   | Rotor             | 1     |
| 02   | Housing              | 1     | 26   | Front End Plate   | 1     |
| 03   | O-Ring (□4x1.2)      | 1     | 27   | O-Ring (□40x3.55) | 1     |
| 04   | Valve Stem           | 1     | 28   | Balancer          | 1     |
| 05   | Snap Ring            | 1     | 29   | Woodruff Key      | 1     |
| 06   | O-Ring (□9.2x1.9)    | 2     | 30   | Lock Ring         | 1     |
| 07   | Regulator            | 1     | 31   | Bearing 6001      | 2     |
| 08   | Exhaust Adapter      | 1     | 32   | Washer            | 1     |
| 08-1 | Hex Head Screw       | 1     | 33   | Gasket (Iron)     | 1     |
| 09   | Muffler Element      | 1     | 34   | Spindle           | 1     |
| 10   | Valve Seat           | 1     | 35   | Snap Ring         | 1     |
| 11   | Valve Tip            | 1     | 36   | Shroud Guard      | 1     |
| 12   | Spring               | 1     | 36-1 | Shroud Guard (SV) | 1     |
| 13   | O-Ring (□10.5x1.8)   | 1     | 37   | Sanding Pad       | 1     |
| 14   | Inlet Adapter        | 1     | 38   | Wrench 22MM       | 1     |
| 15   | Plug                 | 1     | 39   | Tube Connector    | 1     |
| 16   | Handle Lever         | 1     | 40   | Tube              | 1     |
| 17   | Spring Pin (□2.5x42) |       | 41   | Hose Connector    | 1     |
| 18   | Retain Ring          | 1     | 42   | Hose              | 1     |
| 19   | Bearing (6000)       | 2     | 43   | Cloth Bag         | 1     |
| 20   | Rear End Plate       | 1     |      |                   |       |
| 21   | O-Ring (□6x2)        | 1     |      |                   |       |
| 22   | Cylinder             | 1     |      |                   |       |
| 23   | Spring Pin (□3x28)   | 1     |      |                   |       |
| 24   | Rotor Blade          | 5     |      |                   |       |

◆The spare parts may be changed without notice.

◆Order the spare part according to the NO.